



BOMA
Oakland/East Bay

**Keeping Downtown Oakland
Clean, Safe and Vibrant**



A holistic approach to public space management

- **Place Managers**
- **Public Safety Cameras**
- **Public Space Activation**

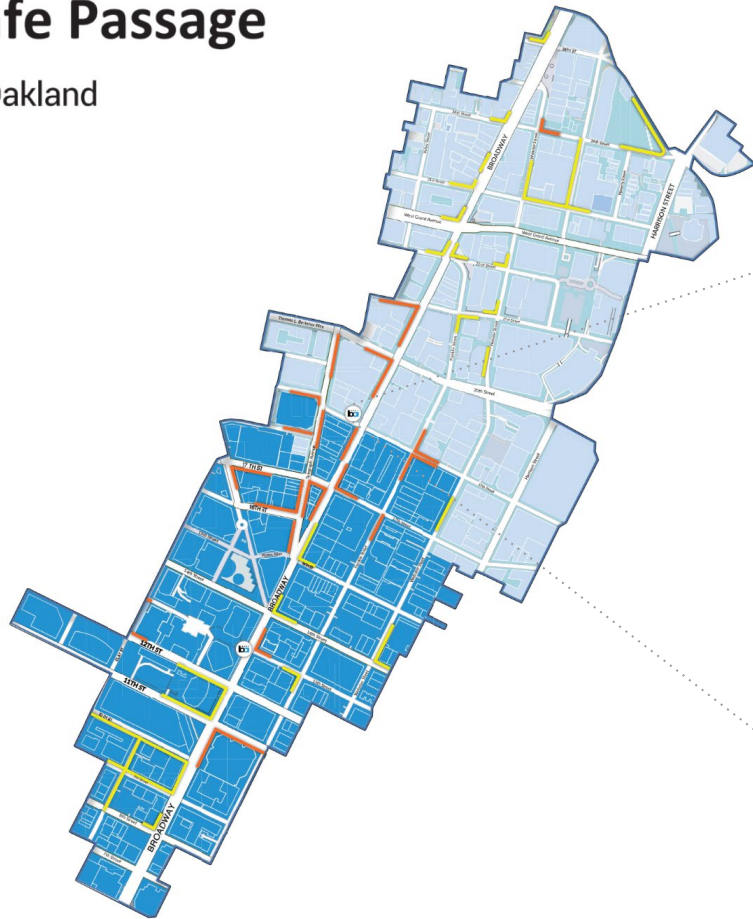


“The sense of safety comes from the adequate, but not overbearing, presence of cameras, other people and active patrols, as well from a space that is well kept and has a positive or “good” image.”

- The Knight Foundation, July 2020

Safe Passage

📍 Oakland



TMG PARTNERS | TMG



Role of the Public-Private Camera Program





“

Eyewitness misidentification is the greatest contributing factor to wrongful convictions proven by DNA testing, playing a role in more than 70% of convictions overturned through DNA testing nationwide.”

– The Innocence Project

About our Camera Program



- Modeled after successful program in Union Square, San Francisco.
- CBD administers grants for participation in the camera program and operates a video control center according to program policy.
- Most cameras are owned by property owners.
- In 2022 Mayor's Office issued a grant to expand camera program as part of Shop Safe Oakland.



Bringing Stakeholders & Participants Together



Public Sector



Commercial Real Estate



Community Organizations



Program Expansion & Grant Funding



By the numbers

- Currently **150 Camera** views in network
- Adding **200+** camera views by 2024 Q1
- Received **\$200K** grant from Mayor's Office
- Issuing **\$5K** grants to property owners in order to facilitate participation



Program Applications



Public Safety

- ▶ Evidentiary use for arrests and prosecutions
- ▶ Real-time monitoring for de-escalation and crime prevention



Traffic Safety

- ▶ Evidentiary use for traffic accident resolution
- ▶ Pattern recognition and analysis for policy and traffic controls



Economic Development

- ▶ Supporting economic revitalization through crime prevention
- ▶ Pedestrian and vehicular traffic analysis for real estate planning and commerce



Street Conditions

- ▶ Data-driven resource allocation and management
- ▶ Collaboration with DPWs and vendor management

Cases Aided by the Camera Program



| RD# | Crime | Unit Making Request | Date of Incident | Date video requested from BID | Date video provided by BID | Suspect Identified | Suspect Arrested | Case Presented to DA | Case Charged by DA | Comments |
|-----------|--------------------------|---------------------|------------------|-------------------------------|----------------------------|--------------------|------------------|------------------------|--------------------|---|
| 22-041738 | 245 (a)(2) P.C. | Felony Assault Unit | 12-Sep-22 | | | | | | | Investigator B. W. No leads, pending further information |
| 22-031904 | 187 PC | Homicide Unit | 13-Jul-22 | 13-Jul-22 | 15-Jul-22 | Yes | Yes | Charged by US Attorney | Yes | Investigator M. J. Video used to identify suspect vehicle license plate. |
| 22-016478 | 242 P.C. | General Crimes | 9-Apr-22 | | | Yes | Yes | Yes | Yes | Investigator R. G. Arrest under RD 22-016489 |
| 22-028940 | 187 P.C. | Homicide Unit | 25-Jun-22 | 25-Jun-22 | 25-Jun-22 | Yes | Yes | Yes | Yes | Investigator Sgt. J. C. Video was main solvability factor in case |
| 22-044672 | 211 P.C. | Robbery Unit | 30 Sep 22 | | | | | | | Case closed out due to no investigative leads |
| 22-043162 | 187 P.C. | Homicide Unit | 20 Sep 22 | | | | | | | Good video evidence however not solved yet |
| 22-015281 | 211 P.C. | Robbery Unit | 2 Apr 22 | 2 Apr 22 | | Yes | Yes | Yes | Yes | Investigator R. A. Suspect identified in Palo Alto case linked to Rolex Robbery Series |
| 22-018014 | 245 (a)(2) P.C. | Robbery Unit | 19 Apr 22 | 21 Apr 22 | 21 Apr 22 | Yes | Outstanding | No | No | Investigator H. J. Suspect is still outstanding |
| 22-024754 | 211 P.C. 243 (d) P.C. | Robbery Unit | 29 May 22 | 29 May 22 | | Yes | Yes | Yes | No | Investigator R. A. Video assisted with identifying a suspect. suspect in case not charged due to his lack of participation in case |

How It Works



HIGH-DEFINITION
CAMERAS



CAMERA NETWORK



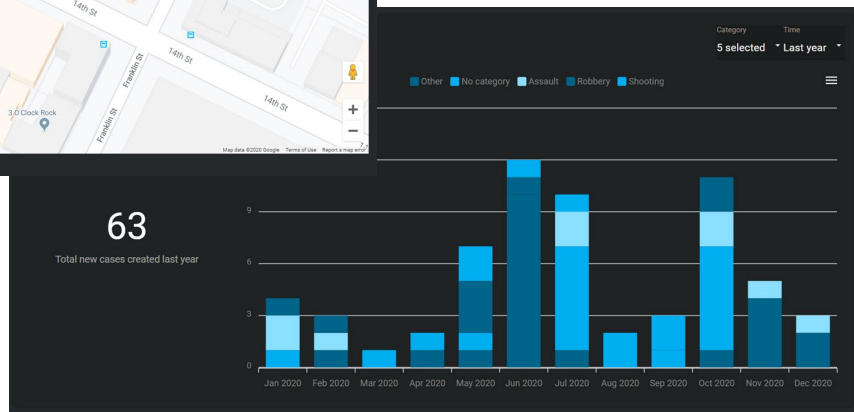
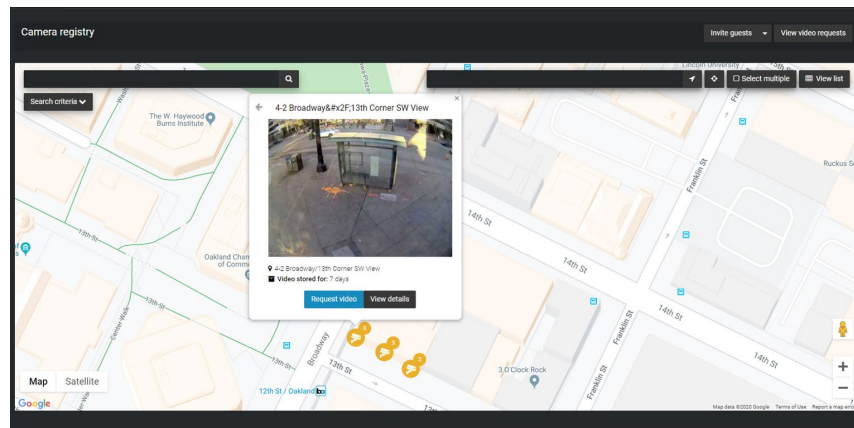
VIDEO CONTROL
CENTER



SafeCity Camera Registry



- ▶ Streamlines the video request and retrieval process.
- ▶ Saves vital investigation resources.
- ▶ Eliminates the need to canvass the neighborhood for cameras.
- ▶ Uses policy-approved process, with controls in place.
- ▶ Uses electronic video request form, capturing all vital information necessary.
- ▶ Provides a centralized management and reporting system with a real-time dashboard.



Where's Curry?



PRO Series - 16 Megapixel Camera





SafeCity
CONNECT
📍 Oakland